

R3 Electric strike - basic version



Note

The R3 Electric Strike is designed for remote opening of left, right (if construction of door frame allows it), and double-wing doors and gates. It is designed to be installed within a doorframe, in which it is possible to make a 23x29x91 mm mounting hole (draw on the right). The lock was made smaller, to the dimensions as indicated, by using a leverage system, thanks to which most doorframes can accommodate our locks.

The R3 Electric Strike can work together with home interphone installation in all types of an entrance door. It is made of rust proof zinc alloys. It can be installed externally, provided that it is protected against flooding, against hostile weather impacts, and against being covered with paint. Additional plate is required for mounting.

Electric strike version

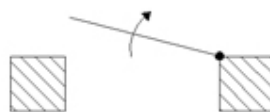
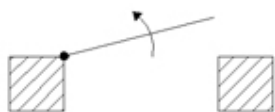
Basic version - the basic type, making it possible to unblock the door upon voltage being supplied to the coil.

When working, the lock gives out a low, humming noise.

Gallery

Determining left- and right-hand doors

The door should be determined from the side of hinges are visible (see picture below).



right-hand door

left-hand door

ТАШЕВ-ГАЛВИНГ ООД
www.tashev-galving.com